

# NORTH 5th STREET IMPROVEMENT PROJECT

## Public Workshop 4

May 30, 2006

### Craig Road to CC-215 (Northern Beltway)

#### Summary of Questionnaire Results

- 93% never use the CAT or MAX bus system.
- 50% would be more inclined to use the transit system if the type and frequency were enhanced in this corridor.
- There is an average of 2.33 vehicles per household.
- 100% of respondents use their private automobile to commute to and from work and to go shopping.
- 38% of households have school-age children; children get to and from school by walking, bicycling, or being driven by adults.
- Primary roads used by area residents include: North 5th Street, Craig Road, Losee Avenue, Ann Road, and Cheyenne Avenue.

#### Number of Attendees

Residents: 39  
Business Operators: 3

#### Questionnaires Completed

Residents: 25  
Business Operators: 2

#### What residents are Concerned About

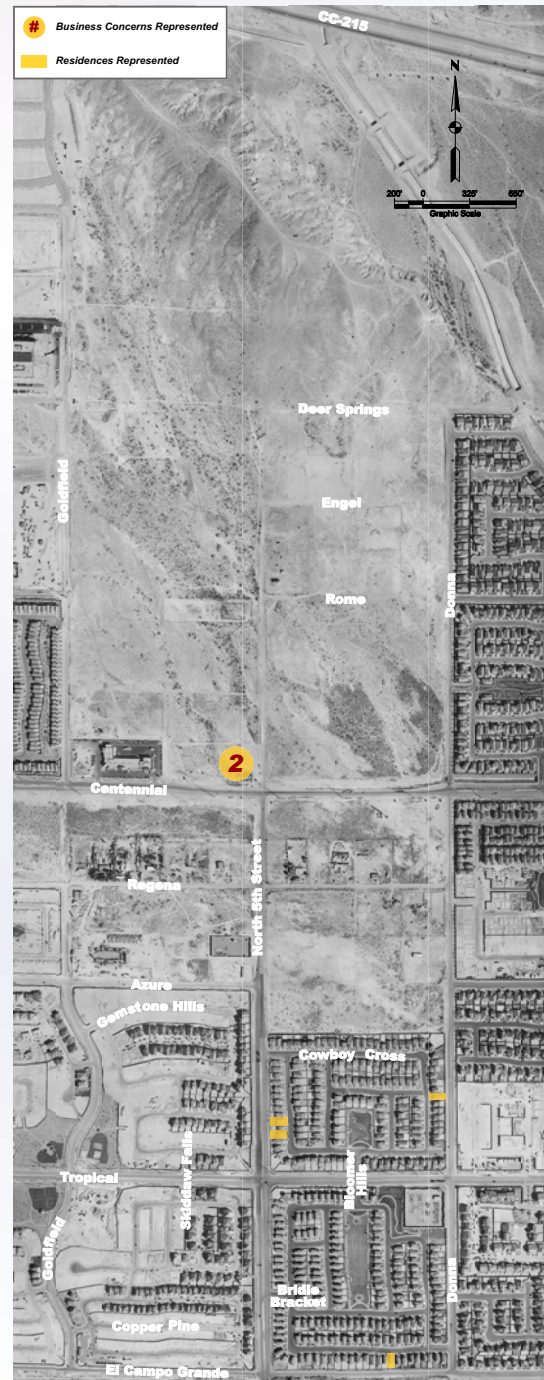
Home Acquisition: 31%  
Increased Traffic: 28%  
Pedestrian Crossings: 21%  
Access to Schools: 24%

Access to Property: 24%  
Increased Noise: 10%  
High Traffic Speeds: 10%  
Landscaping: 10%

#### What Businesses are Concerned About

- R.C. Farms**
  - Property maintains 6000 pigs and 300 cattle
  - Does not want a 150-foot speedway up North 5th Street
  - Loss of any property would be hard on the business
  - Needs to maintain access to property for deliveries
- Tru-West (Developer)**
  - High-density mixed-use commercial development planned for this property on northwest corner of North 5th Street and Centennial Parkway
  - Needs multiple access points to property
  - Proposed preliminary bridge structure at this location may be problematic for business
  - Suggests a full interchange at Centennial Pkwy instead of at Ann Road

CONTINUED AT BOTTOM OF RIGHT PANEL



CONTINUED FROM TOP OF LEFT PANEL